

LINEARPOTI

Linearpotentiometer, Cylindrical Housing



Series LZW

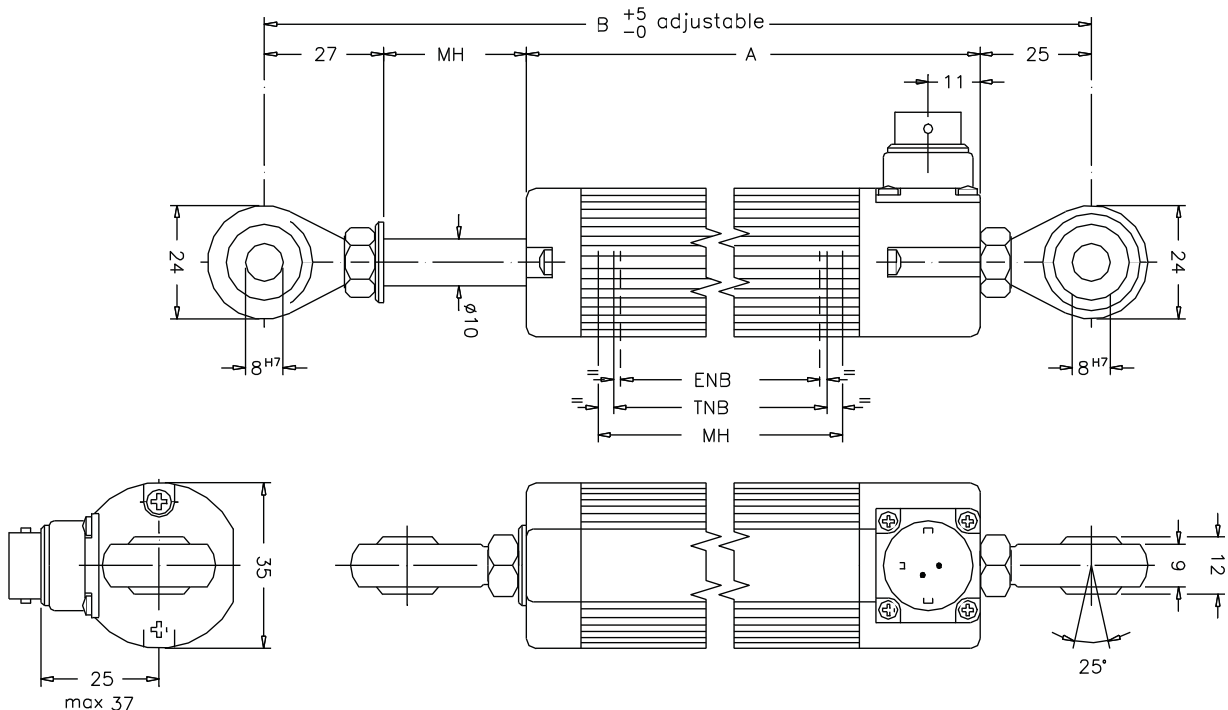
- **Brackets self adjustend**
- **Range 50 - 750 mm**
- **Protection IP 65**
- **Displacement speed < 5 m/s**
- **Linearity $\pm 0,05\%$**
- **Infinite resolution**
- **Working temperature -30...+100°C**
- **Lifetime >25x10⁶ meters or >100x10⁶ cycles**
- **Electrical Connection**
 - 4-pin connector according DIN 43650-ISO4400 (standard)**
 - 5-pin circular connector**

Technical data

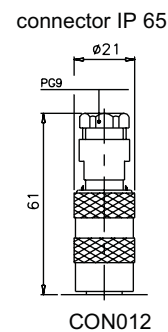
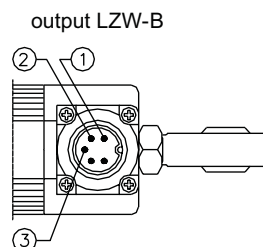
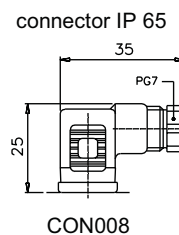
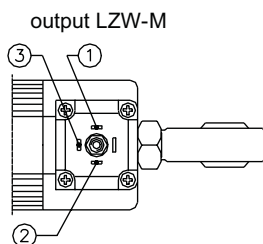
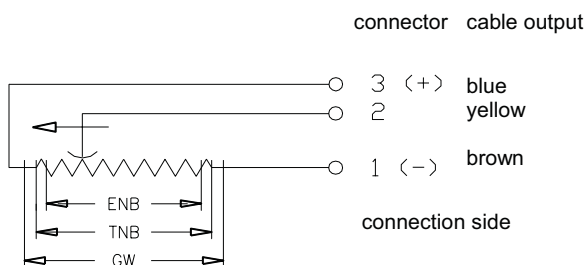
range	50/100/130/150/175/200/225/275/300/375/400/450/500/600/750 mm		
protection	IP 65	max. supply voltage	60 V
displacement speed	<5 m/s	temp. Coeff. Of the resistance	-200 ±200 ppm/°C
displacement force	<10 N	eff. Temp. Coeff. Of output voltage	<1,5 ppm/°C
linearity	±0,05%	electrical isolation	>100 MOhm at 500 V
resolution	infinite	dielectric strength	>500 Veff at 50 Hz
tolerance on resistance	±20%	working temperature	-30...+100°C
recommended curser current	<1 µA	storage temperature	-50...+120°C
max. curser current	<10 mA	rod material	stainless steel AISI 431
max. dissipation at 40°C	3 W	case material	anodised aluminium, nylon 66 GF 40
max. angular tolerance	±30°	fixing	bearings

Dimension and Electrical Data

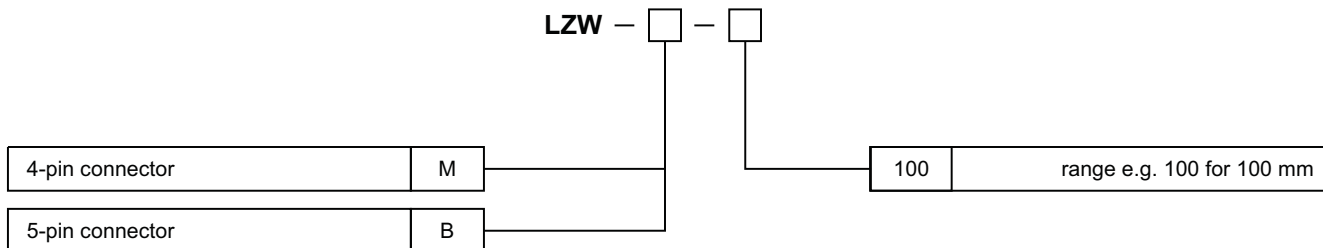
range		50	100	130	150	175	200	225	275	300	375	400	450	500	600	750	
electrical stroke (ENB) +3/-0	mm	50	100	130	150	175	200	225	275	300	375	400	450	500	600	750	
theoretical electr. stroke (TN) ±1	mm	ENB+3					ENB + 4					380	406	457	508	609	762
resistance	kOhm	5					5					5	5	5	5	5	10
mechanical stroke (MH)	mm	ENB + 9					ENB + 10					386	412	463	518	619	772
case length (A)	mm	ENB + 129					ENB + 130					512	538	589	664	765	918
min. distance between bearings (B)	mm	ENB + 181					ENB + 182					564	590	641	716	817	970



Connection and Accessories



Order Code



50 mm	LZW-M- 50
100 mm	LZW-M-100
130 mm	LZW-M-130
150 mm	LZW-M-150
175 mm	LZW-M-175
200 mm	LZW-M-200
225 mm	LZW-M-225
275 mm	LZW-M-275
300 mm	LZW-M-300
375 mm	LZW-M-375
400 mm	LZW-M-400
450 mm	LZW-M-450
500 mm	LZW-M-500
600 mm	LZW-M-600
750 mm	LZW-M-750

optional

4-pin connector DIN 43650-ISO4400	LZW-M-XXX
5-pin. connector	LZW-B-XXX

other options on request

accessories

4-pin connector IP 65	CON008
5-pin connector IP 65	CON012